



24 kHz Transducer

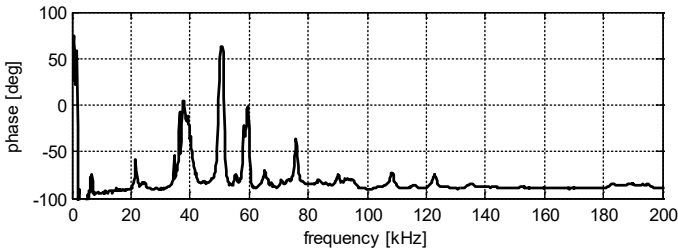
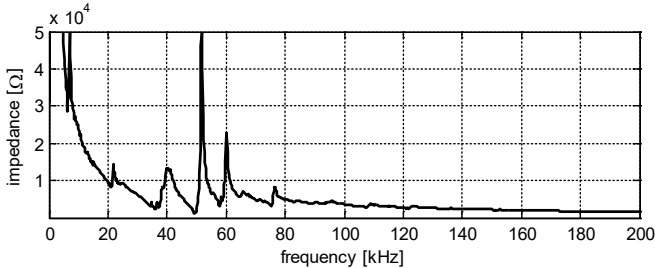
Part No.: 325 40 026

Specifications

Type:	Single-Crystal
Frequency:	24 kHz \pm 5 kHz
Bandwidth:	<5 kHz
Driving voltage:	-1000 V to +1000 V
Matching inductance:	absent
Piezo electrical cell capacity:	450 pF
Connector type:	BNC
Operating temperature:	-20° C...+60° C
Contact surface diameter:	50 mm
Dimensions:	Diameter: 50 mm Length (without BNC connector): 95.2 mm Length (including BNC connector): 107.2 mm
Weight:	1325 g



Electrical Impedance



NOTE! The technical specifications are based on averaging the measurements carried out with 10 Transducers.

54 kHz Exponential Transducer

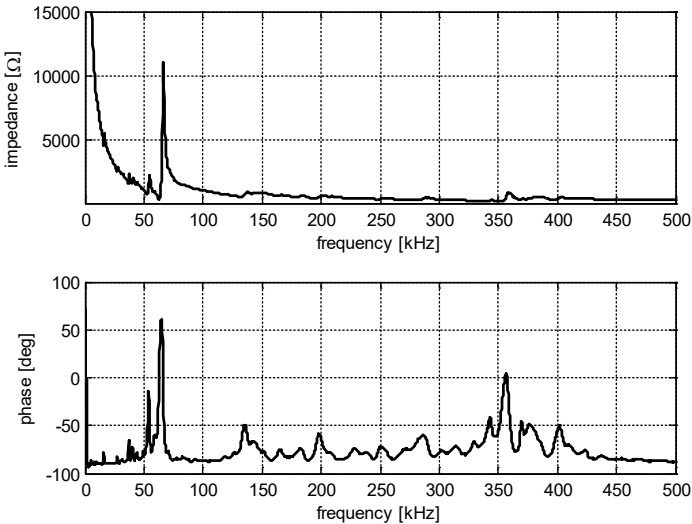
Part No.: 325 40 176

Specifications

Type:	Single-Crystal
Frequency:	54 kHz \pm 5 kHz
Bandwidth:	<10 kHz
Driving voltage:	-1000 V to +1000 V
Matching inductance:	absent
Piezo electrical cell capacity:	2 nF
Connector type:	BNC
Operating temperature:	-20° C...+60° C
Contact surface diameter:	4 mm
Dimensions:	Diameter: 49.7 mm Length (without BNC connector): 99.43 mm Length (including BNC connector): 111.43 mm
Weight:	244 g



Electrical Impedance



NOTE! The technical specifications are based on averaging the measurements carried out with 10 Transducers.

54 kHz Transducer

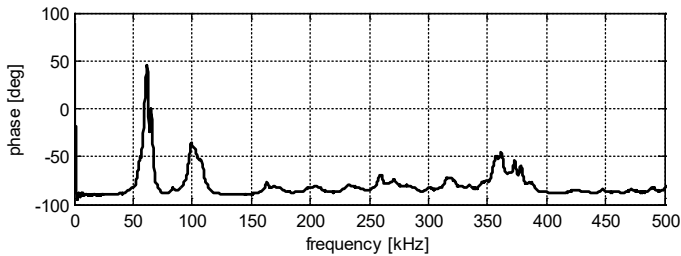
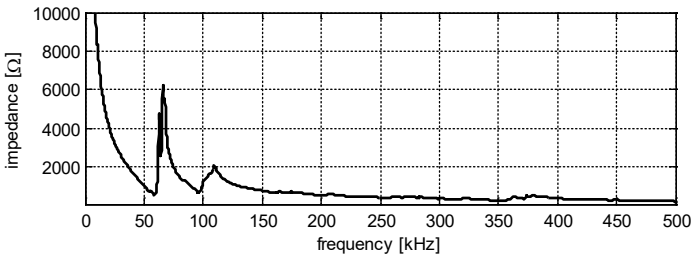
Part No.: 325 40 131

Specifications

Type:	Single-Crystal
Frequency:	54 kHz \pm 5 kHz
Bandwidth:	<10 kHz
Driving voltage:	-1000 V to +1000 V
Matching inductance:	absent
Piezo electrical cell capacity:	2 nF
Connector type:	BNC
Operating temperature:	-20° C...+60° C
Contact surface diameter:	36.77 mm
Dimensions:	Diameter: 49.7 mm Length (without BNC connector): 46 mm Length (including BNC connector): 58 mm
Weight:	287 g



Electrical Impedance



NOTE! The technical specifications are based on averaging the measurements carried out with 10 Transducers.

150 kHz Transducer

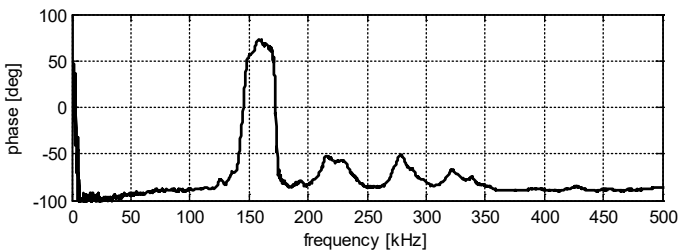
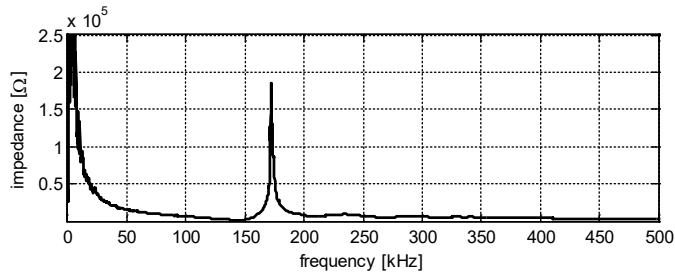
Part No.: 325 40 141

Specifications

Type:	Single-Crystal
Frequency:	150 kHz \pm 10 kHz
Bandwidth:	<10 kHz
Driving voltage:	-1000 V to +1000 V
Matching inductance:	absent
Piezo electrical cell capacity:	245 pF
Connector type:	BNC
Operating temperature:	-20° C...+60° C
Contact surface diameter:	22.27 mm
Dimensions:	Diameter: 28 mm Length (without BNC connector): 46 mm Length (including BNC connector): 58 mm
Weight:	63 g



Electrical Impedance



NOTE! The technical specifications are based on averaging the measurements carried out with 10 Transducers.

250 kHz Transducer

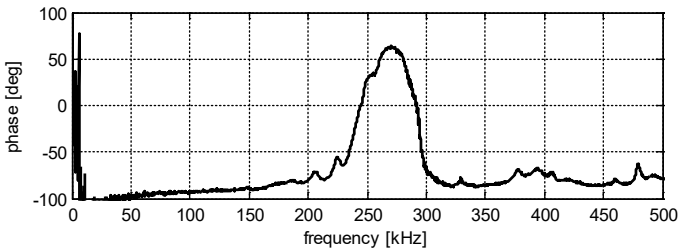
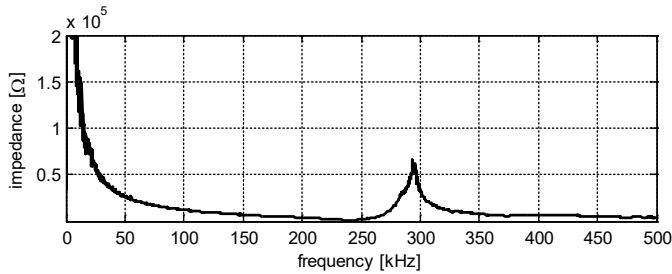
Part No.: 325 40 177

Specifications

Type:	Single-Crystal
Frequency:	250 kHz \pm 10 kHz
Bandwidth:	<20 kHz
Driving voltage:	-1000 V to +1000 V
Matching inductance:	absent
Piezo electrical cell capacity:	122 pF
Connector type:	BNC
Operating temperature:	-20° C...+60° C
Contact surface diameter:	22.27 mm
Dimensions:	Diameter: 28 mm Length (without BNC connector): 46 mm Length (including BNC connector): 58 mm
Weight:	58 g



Electrical Impedance



NOTE! The technical specifications are based on averaging the measurements carried out with 10 Transducers.

40 kHz Dry-Point Shear Wave Transducer

Part No.: 325 40 210

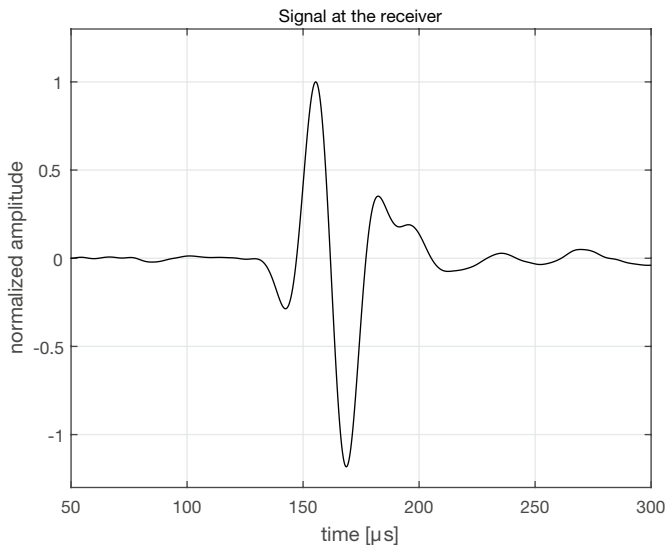
Specifications

Type:	5 x Dual-Crystal, dry-point contact
Frequency:	40 kHz \pm 4 kHz
Bandwidth:	35 – 40 kHz
Driving voltage:	-200 to +200 V
Matching inductance:	absent
Piezo electrical cell capacity:	5 x 0.6 nF
Connector type:	BNC
Operating temperature:	0...+50° C
Contact surface diameter:	5 x 2 mm
Diameter:	84 mm
Length:	114 mm
Weight:	340 g
Wave type:	Shear wave



Experimental setup

- POM-C test block with a thickness of 126 mm
- **UPV Settings:** Transducer frequency: 40 kHz. Pulse voltage: 50 V, square wave. Gain: 500. Range: Short range



Proceq Europe

Ringstrasse 2
CH-8603 Schwerzenbach
Phone +41 43 355 38 00
Fax +41 43 355 38 12
info-europe@proceq.com

Proceq UK Ltd.

Bedford i-lab, Priory Business Park
Stannard Way
Bedford MK44 3RZ
United Kingdom
Phone +44 123 483 45 15
info-uk@proceq.com

Proceq USA, Inc.

117 Corporation Drive
Aliquippa, PA 15001
Phone +1 724 512 03 30
Fax +1 724 512 03 31
info-usa@proceq.com

Proceq Asia Pte Ltd

1 Fusionopolis Way
#20-02 Connexis South Tower
Singapore 138632
Phone +65 638 239 66
Fax +65 638 233 07
info-asia@proceq.com

Proceq Rus LLC

Ul. Optikov 4
korp. 2, lit. A, Office 410
197374 St. Petersburg
Russia
Phone/Fax +7 812 448 35 00
info-russia@proceq.com

Proceq Middle East

P. O. Box 8365, SAIF Zone,
Sharjah, United Arab Emirates
Phone +971 6 557 8505
Fax +971 6 557 8606
info-middleeast@proceq.com

Proceq SAO Ltd.

South American Operations
Rua Paes Leme, 136, cj 610
Pinheiros, São Paulo
Brasilien Cep. 05424-010
Phone +55 11 3083 38 89
info-southamerica@proceq.com

Proceq China

Unit B, 19th Floor
Five Continent International Mansion, No. 807
Zhao Jia Bang Road
Shanghai 200032
Phone +86 21 631 774 79
Fax +86 21 631 750 15
info-china@proceq.com

Subject to change without notice. Copyright © 2018 by Proceq SA, Schwerzenbach. All rights reserved.
Part number: 81032702 ver 06 2018